

## MIXED SERVICE

TIRES DESIGNED TO MOVE FORWARD AND CLIMB OVER EVERY OBSTACLE IN THE ROUGHEST WORKING TERRAINS THANKS TO SPECIFIC AND ROBUST TECHNICAL SOLUTIONS IN BOTH THE CASING AND TREAD AREAS. THE MIXED SERVICE SEGMENT OFFERS A COMPLETE RANGE OF FRONT, DRIVE, AND TRAILER TIRES DEVELOPED TO ALLOW FLEETS TO WORK WITHOUT RESTRICTIONS AT TOUGH WORK SITES AND ACHIEVE VERY HIGH MILEAGE WHEN USED ON ASPHALT ROADS. ENHANCED MATERIALS ARE USED IN COMBINATION WITH STATE-OF-THE-ART TIRE DESIGNS TO OFFER A RELIABLE SOLUTION FOR HEAVY OPERATIONS.

## CORPORATE SOCIAL RESPONSIBILITIES

### MISSION & COMMITMENT

Giti Tire endorses the United Nations Sustainable Development Goals (SDGs) and incorporates them into each CSR activity. These goals cover a broad range of social and economic development issues. Included among them are poverty, hunger, health, education, climate change, gender equality, water sanitation, energy, environment, and social justice.



## TECHNICAL DATA

### GAM851

Size	LI	SI	Pattern	Rim	Load Single Kg	Load Dual Kg	Speed	Temp	Noise dB	Rolling Resistance	Wear	Braking
385/65R22.5	164 (158)	K (L)	GAM851	3PMSF	11.75	5000	389	1072	72	B	B	C
425/65R22.5	165	K	GAM851	3PMSF	12.25	5150	422	1124	72	B	B	C
445/65R22.5	169	K	GAM851	3PMSF	13.00	5800	444	1150	72	B	B	C

### GAM831

Size	LI	SI	Pattern	Rim	Load Single Kg	Load Dual Kg	Speed	Temp	Noise dB	Rolling Resistance	Wear	Braking
13R22.5	156/150 (154/150)	K (L)	GAM831	3PMSF	9.75	4000	320	1124	74	B	B	D
315/80R22.5	158/150 (154/150)	K (L)	GAM831	3PMSF	9.00	4250	312	1076	73	A	B	D

### GAM837

Size	LI	SI	Pattern	Rim	Load Single Kg	Load Dual Kg	Speed	Temp	Noise dB	Rolling Resistance	Wear	Braking
295/80R22.5	154/149 (152/149)	K (L)	GAM837	3PMSF	9.00	3750	298	1044	73	B	C	C
315/70R22.5	156/150 (154/150)	K (L)	GAM837	3PMSF	9.00	4000	312	1014	72	B	C	D

### GAM833

Size	LI	SI	Pattern	Rim	Load Single Kg	Load Dual Kg	Speed	Temp	Noise dB	Rolling Resistance	Wear	Braking
12.00R24	160/156	K	GAM833	M+S	8.50	4500	315	1225	73	B	C	C
325/95R24	162/160	K	GAM833	M+S	9.00	4750	325	1228	73	B	B	C

### GDM686, GDM686+

Size	LI	SI	Pattern	Rim	Load Single Kg	Load Dual Kg	Speed	Temp	Noise dB	Rolling Resistance	Wear	Braking
13R22.5	156/150	K	GDM686+	3PMSF	9.75	4000	320	1124	73	A	B	E
11R22.5	148/145	J	GDM686	3PMSF	8.25	3150	279	1054	73	A	B	E
12R22.5	152/148	K	GDM686	3PMSF	9.00	3550	300	1085	73	A	B	E
295/80R22.5	152/149	K	GDM686	3PMSF	9.00	3550	298	1050	73	A	B	D
315/80R22.5	158/150	K	GDM686	3PMSF	9.00	4250	312	1076	73	A	B	D

# MIXED SERVICE

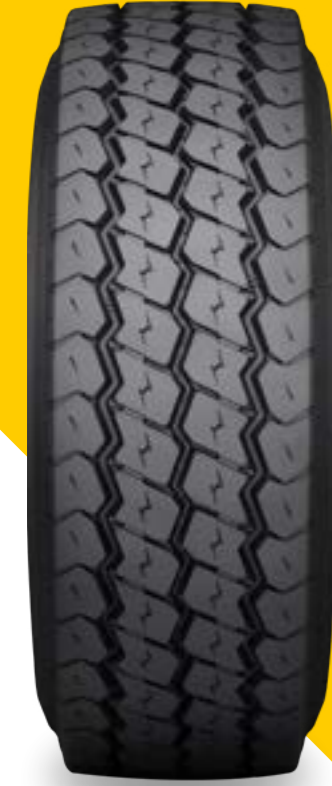


Enjoy Driving





## GAM851



NEW WIDE BASE STEER AND TRAILER DESIGN PROVIDES EXCEPTIONAL PERFORMANCE IN ROUGH TERRAIN APPLICATIONS

- > Superb resistance to tread tearing, impacts, and casing damage in on/off-road conditions
- > Very regular wear pattern, delivering excellent mileage performance
- > 3PMSF Certified



## GAM831



AN ALL-AXLE POSITION TIRE DESIGNED FOR VARIED ON/OFF-ROAD OPERATIONS

- > A combination of rib and lug design with enhanced tread profile gives good self-cleaning properties
- > The anti-cut-and-chip compound provides excellent protection against damage from impacts, cuts and abrasions
- > 3PMSF Certified



## GAM833



A 24" ALL-AXLE POSITION TIRE DESIGNED FOR SPECIALTY VEHICLES IN VERY SPECIFIC ON/OFF-ROAD OPERATIONS

- > The combination of rib and lug design with enhanced tread profile offers excellent self-cleaning properties
- > The anti-cut-and-chip compound offers great protection against damage from impacts, cuts and abrasions



## GDM686 GDM686+



GDM686 IS AN AGGRESSIVE DIRECTIONAL DEEP-TREAD DRIVE AXLE PATTERN FOR ON/OFF-ROAD APPLICATIONS

- > Plus „+“ version for significant mileage increase compared to GDM686
- > Advanced anti-cut-and-chip compound with robust casing construction, providing high retreadability
- > Provides exceptional grip in rough terrain conditions as well as in winter conditions







## GAM837



AN ALL-AXLE POSITION TIRE DESIGNED FOR VARIED ON/OFF-ROAD OPERATIONS

- > A combination of rib and lug design with enhanced tread profile gives good self-cleaning properties
- > The anti-cut-and-chip compound provides excellent protection against damage from impacts, cuts and abrasions
- > 3PMSF Certified



FEATURES	BENEFITS
 <p>Deep tread design with special anti-cut-and-chip compound</p>	<p>Superb resistance to tread tearing, impacts, and casing damage in on/off-road conditions</p>
 <p>Compact, three-groove design connected with multiple tie bars</p>	<p>Provides very regular wear and reduced noise levels</p>
 <p>Upper rubber sidewall protection ribs</p>	<p>Protects casing from impact, cuts and curb damage</p>
 <p>Increased load index to 164 K</p>	<p>Fitment on 10-ton steer and trailer axles</p>