







TECHNICAL DATA

Size	LI	SI	Pattern		Rim	Load Single Kg	Load Dual Kg			Noise dB			
265/70R19.5	143/141	J	GAU867 ^{v1}	3PMSF	7.50	2725	2575	262	867	70	A	C	D
11R22.5	148/145	J	GAU867 ^{v1}	3PMSF	8.25	3150	2900	279	1054	71	A	C	D
275/70R22.5	152/148 (150/148)	J (K)	GAU867 ^{v1}	3PMSF	8.25	3550	3150	276	958	70	A	C	C
295/80R22.5	154/150	J	GAU867 ^{v1}	3PMSF	9.00	3550	3350	298	1050	71	A	C	D
245/70R19.5	136/134	M	GT867	3PMSF	7.50	2240	2120	248	839	70	A	B	E
11R22.5	148/145	J	GT867	3PMSF	8.25	3150	2900	279	1054	71	A	C	D
305/70R22.5	152/150 (154/150)	J (E)	GT867	M+S	9.00	3550	3350	305	1000	72	A	C	D
315/80R22.5	158/150	J	GT867	M+S	9.00	4250	3350	312	1076	72	A	C	C
275/70R22.5	152/148 (150/148)	J (K)	GAU861	3PMSF	8.25	3350	2900	276	958	73	A	C	D

URBAN

HIGHEST QUALITY STANDARDS ARE USED IN TIRES MANUFACTURED FOR URBAN APPLICATIONS TO ENSURE THE MAXIMUM LEVEL OF SAFETY, COMFORT, AND ENVIRONMENTAL SUSTAINABILITY, MATCHED WITH THE NEW TRENDS FOR FUTURE MOBILITY. THE TIRES ARE DESIGNED FOR ELECTRIC VEHICLE APPLICATIONS FEATURING THE LATEST TECHNOLOGICAL SOLUTIONS TO CARRY HIGH LOADS, REDUCE ENERGY CONSUMPTION, AND ENHANCE POTENTIAL MILEAGE. THE TIRES COMPLY WITH REQUIREMENTS FOR BOTH THE OLDER AND THE NEW GENERATION OF VEHICLES TO PROVIDE A FLEXIBLE SOLUTION FOR ALL EUROPEAN URBAN ENVIRONMENTS.

CORPORATE SOCIAL RESPONSIBILITIES

MISSION & COMMITMENT

Giti Tire endorses the United Nations Sustainable Development Goals (SDGs) and incorporates them into each CSR activity. These goals cover a broad range of social and economic development issues. Included among them are poverty, hunger, health, education, climate change, gender equality, water sanitation, energy, environment, and social justice.



SUSTAINABLE DEVELOPMENT GOALS



URBAN

Enjoy Driving



TIRES

GAU867^{V1}

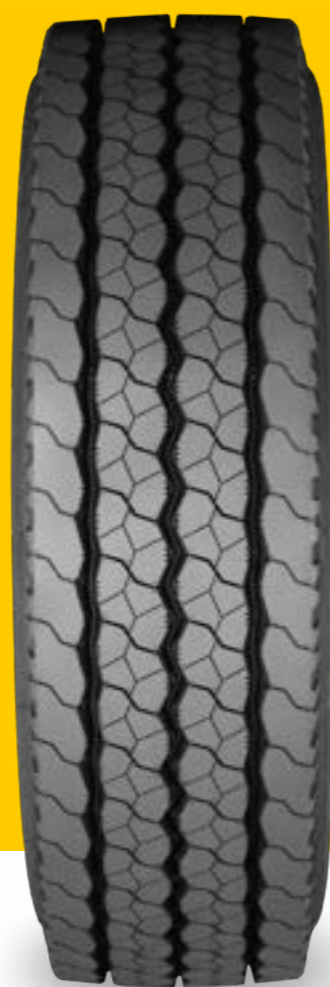


LATEST TIRE DEVELOPED FOR BUSES OPERATING IN SEVERE URBAN CONDITIONS WITH FREQUENT STOP-AND-START OPERATION

- > Latest Giti development of urban tire with new optimised casing construction
- > High resistance to curb and impact damage, with excellent mileage performance and high passenger comfort
- > 3PMSF Certified



GT867

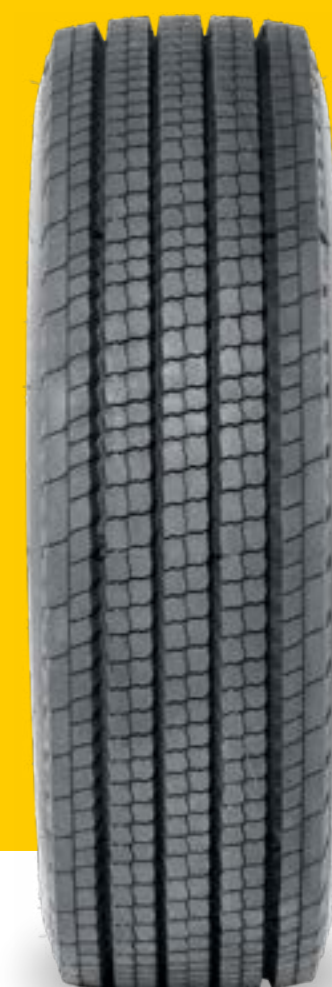


GT867 IS SPECIALLY DESIGNED FOR CONSTANT STOP-AND-GO OPERATING CONDITIONS WITH FREQUENT CHANGES IN SPEED AS WELL AS DIRECTION

- > An urban tire with reinforced sidewall, robust casing, cap and base construction technology
- > Resistant to curb and impact damage, with good mileage performance combining comfort with reduced noise levels
- > 3PMSF Certified



GAU861



DESIGNED SPECIFICALLY FOR BUSES OPERATING IN URBAN CONDITIONS WITH FREQUENT STOPS, CHANGES IN DIRECTION AND SPEED

- > A high performing urban tire with reinforced sidewall protectors, robust casing construction, cap and base technology
- > Super resistant to curbing and impact damage with good mileage performance this is combined with reduced noise levels for increased passenger comfort
- > 3PMSF Certified



FEATURES

BENEFITS



Wide and robust tread pattern coupled with new casing construction

Enhances mileage performance and handling of vehicle



Advanced siping in centre of tread pattern

Reduces noise levels and improves passenger comfort



Reinforced sidewalls with asymmetric sidewall wear indicators

Protects the tire against curb damage and abrasions; the sidewall wear indicator indicates the correct time to rotate or demount the tire



E-Bus logo on sidewall in sizes 275/70R22.5 and 265/70R19.5

Designed to meet next generation electric buses requirements

FEATURES

BENEFITS



Very wide tread pattern with deep grooves

Provides excellent mileage



Advanced tread block and siping in tread pattern

Reduces noise levels and improves passenger comfort



Reinforced sidewalls with sidewall wear indicators

Protects the tire against curb damage and sidewall abrasion, and the wear indicators shows the correct time to rotate/demount the tire

FEATURES

BENEFITS



Wide and very deep tread

Provides excellent mileage performance



Numerous full tread depth sipes in tread blocks

Provides a very high level of winter traction and braking properties



Reinforced sidewalls with asymmetric sidewall wear indicators

Protects the tire from curbing damages and abrasions, the sidewall wear indicator indicates the correct time to rotate or demount the tire